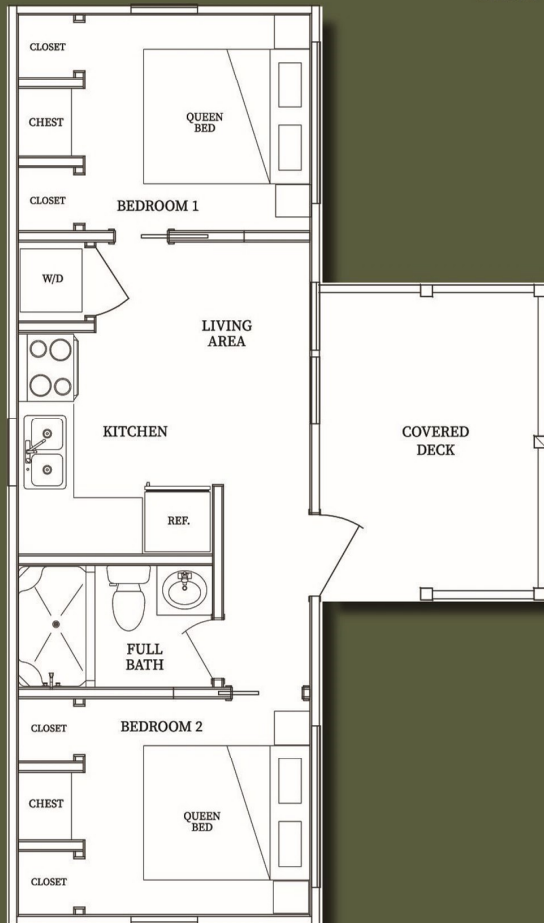


# GLENWOOD

## FEATURES & SPECIFICATIONS



- ◆ 8'-0" Sidewalls
- ◆ 7/12 Pitch Roof
- ◆ LP SmartSide Siding
- ◆ Pine Tongue and Groove Interior Throughout
- ◆ 29-Gauge Metal Roof
- ◆ Insulation Package R-19 and R-13
- ◆ Tankless Electric Water Heater
- ◆ 2 x 9K Mini -Split Heating & Cooling Units with 1 - 18K Condenser
- ◆ Full Glass Door with Mini Blinds
- ◆ 2" Mini Blinds Throughout
- ◆ Vaulted Ceilings
- ◆ Solid Panel Pocket Doors
- ◆ Recessed Lighting
- ◆ Stackable Washer and Dryer
- ◆ Custom Hardwood Cabinets
- ◆ Rolled Edge Formica Countertops
- ◆ 30" Electric Range
- ◆ Microwave Hood Combination
- ◆ Stainless Steel Double Sink
- ◆ 52" Fiberglass Shower/Tub Combination
- ◆ 10' Covered Porch

\*Options and upgrades are available on a separate sheet located inside the information folder.

# GLENWOOD

2 Bedroom with Loft, 1 Bath | 396 Sq. Ft.



The Glenwood is focused on privacy. This floorplan package features modern cottage interior finishes, vaulted ceilings throughout creating an open, airy ambiance, recessed lighting, private bedrooms on each end of the home with ample storage and a ten-foot covered porch that is wired and braced for a ceiling fan to maximize outdoor living.

141 Sunset Blvd, West Columbia SC 29169  
(803)312-3000